

The Franciscan



The Bishop's Committee



• Bishop and Rector •
The Rt. Rev. Jon J. Bruno
 (800)366-1536

The Rev. Sarah Kitch
 (805) 526-5141
 (818) 442-4514
stfrancis.simi@gmail.com

Bishop's Warden

Amy Brown 805-231-5502
amysbrowns@aol.com

Junior Warden

Tony Fox 805-520-9009
Teejay2002@msn.com

Clerk

Donna Shiver 805 208-5866
Donna.shiver@fruitgrowers.com

Finance

Vicky Beasley 805 501-1305
VickyBeasley@colorandlight.us

Worship & Fellowship

Scott Eben 310 629-8137
carpettech@sbcglobal.net

Communications

Katherine Todd 805 241-4772
krosstodd1@gmail.com

Service/Outreach/Fellowship/Education

Amy Brown 805 231-5502
amysbrown@aol.com

Pastoral Care

Lee Haack 805 583-0498
dukehaack@sbcglobal.net

Christian Education

Membership

Joe Zepf 818 770-1279

From our Vicar... February 2016

"Self-fulfillment, Jesus says, comes through letting go, relinquishing our need to control and define, to manipulate and possess. Self-fulfillment comes through laying down our lives in obedience to God's deepest yearnings for us."

The above quote from Brother David Vryhof of the Society of Saint John the Evangelist in Boston, Massachusetts, seems very appropriate for the month of February as we lean into Lent.

"Lent" comes from the Anglo-Saxon word *lencton* – meaning "spring" or "lengthening" from the time of year when the days grow long. In 2016, Lent begins on Ash Wednesday (February 10) and ends with the Easter Triduum (Maundy Thursday through Easter Day), covering 40 days (excluding Sundays which are little feasts of the Resurrection). Some believe that the word "Lent" may derive from the Latin *lentare*, which means "to bend."

This understanding reinforces a sense of Lent as a time of preparation for personal and collective transformation. Having nurtured ourselves through Advent, Christmas and Epiphany, Lent becomes the time to look truthfully at ourselves and make changes.

This is our opportunity to take a look truthfully at ourselves and move into developing changes and growth. As we quiet ourselves during this Season, we listen more to the Holy Spirit, and the nudges that get our attention. We might consider our readings and take time to reflect and practice Lectio Divina (Holy Reading) during this time, reading a passage and asking "what catches my attention?" We might hold a time of quiet prayer as a discipline this Lent or participate with Centering Prayer.

However we enter into this Season of reflection and self introspection with God, it is a time that we lay down our lives of busyness and bustle and let our deepest yearnings be attended. What is it that you long for? What is it that doesn't seem to be resolved or reconciled in your life?

Lent is also a time for Spiritual Direction. If you would like to meet together and have some time to discuss some of your thoughts, please don't hesitate to call. It would be a privilege to be with you.

Take this Season quietly and intentionally. Let the Holy Spirit guide you as you seek God and give God your heart, once again, to God's great Love. Peace be with you always.



Sarah



Published monthly by St. Francis of Assisi Episcopal Church 280 Royal Avenue, Simi Valley CA 93065
 Email: stfrancis.simi@gmail.com Website: stfrancischurchofsimi.org 805.526.5141 FAX 805.520.3819



MOVEMENT IN OUR BISHOP'S COMMITTEE

Please know my greatest thanks to our Sr. Warden, Tom Butler who has served on the Bishop's Committee for three years and seen St. Francis through a smooth transition and change. It has been his leadership and faithful attention to the needs of St. Francis that has allowed us to move seamlessly into a new season and time of Spiritual Growth and Development. We will miss him as our Sr. Warden.

However, those shoes will be filled aptly with our new Sr. Warden, Amy Brown, whose experience and faithful involvement at St. Francis over so many years will help steer and navigate us into this new visioning for St. Francis. Please make yourself known to Amy as you consider ministries and opportunities that you would like to see realized.

As well, our beloved Cathy Grimes has also fulfilled her term on the Bishop's Committee. Her passion for Christian Education and children is a heartbeat that is life giving around St. Francis. She has sought faithfully to teach Catechesis and always give herself to every child that has come her way. We are so grateful for all her leadership on the Bishop's Committee and appreciate her ministry. Please bless Cathy for her faithful service and willing servanthood for us all.

We welcome Susan Swoish on the Bishop's Committee to begin to share her leadership and ample talents and gifts for St. Francis. Susan is a prayer warrior and a woman of much Grace. It is a privilege to share in ministry with her in serving St. Francis.

Please let Vicar Sarah know if you are interested in sharing in leadership and involvement on the Bishop's Committee. The opportunity to participate in bringing St. Francis into a new time and season is available for all. Let's see what God wants to do in the Kingdom work!

Parish Prayer Needs:

Please keep the Perry Family in prayer.

Music Program: Pray for more regular singers.

Healing: Rev. Barbara Mudge, Jean, Braydon (baby born with half a heart), Hank, Fr. Steve, Al, Mary, Rich, Yvonne, Joy, VanNessa, Dee, Jeff, Jim, Jan, David, Margie, Jan, Lee, Trish, Sue, the wife of Wayne, Tony, Mark, Michele, Eric, Louise, Jean, Tony, Bob & family, Edith, Rana, Howard, Mary, Donna.

Our elderly and chronically ill: Dolores, Bill and Jean, Pat, Donna, Eva, Yvonne, Mary, Anne, Harry, Ethel, Phil, Martha.

Comfort and Strength: Perry Family, Shiver family, Donna, Mike & Jennifer, Susan, Lou, Diana, Angela, George, Derek, Beth, Jennifer, Debbie and Dale, The Jones Family, The Anusiem Family, all clients of the Samaritan Center, Barbara, Shirley's family, Pearl's family, Tom's family, Mary Hyatt.

Members and News

St. Francis Lenten Series 2016

"Faith Encounters"

For our Lenten series this year we will screen three powerful films about the life of faith on Thursday evenings. We will use these as an opportunity to reflect on our personal and communal Lenten journeys. We will begin with a simple soup supper in the parish hall followed by each film being screened in two parts.

Soup Supper: 6.00

Screening: 6.45 — 7.30

Reflection: 7.30 — 8.00

Feb. 11 > Session 1 Dietrich Bonhoeffer — Part One

Feb. 18 > Session 2 Dietrich Bonhoeffer — Part Two

Feb. 25 > Session 3 God on Trial — Part One

Mar. 3 > Session 4 God on Trial — Part Two

Mar. 10 > Session 5 Chaplains — Part One

Mar. 17 > Session 6 Chaplains — Part Two

(NOTE: The "Chaplains" sessions, 5 & 6, will run 15 minutes longer due to the length of the film.)

***** It should be noted that these films treat serious subjects. Some of the material will not be suitable for young children. Please see Vicar Sarah or David if you have questions.**

Feb. 11 & 18

BONHOEFFER—Pastor, Pacifist, Nazi Resister

A documentary film by Martin Doblmeier.

"Powerful and shocking..." —*NY Times*

"An heroic odyssey illuminated with admirable clarity." —*LA Times*

This critically acclaimed documentary classic tells the dramatic story of one of the great Christian figures of the last century – Dietrich Bonhoeffer. A triumph when it was released theatrically to capacity crowds, the film brings to life the man who was beloved pastor, prophetic writer and Nazi resister.

We will watch this wonderful film in two parts and reflect on how Dietrich Bonhoeffer's faith journey may relate to us now.

<http://journeyfilms.com/media/>

Feb. 25 & Mar. 3

GOD ON TRIAL

A Masterpiece Theatre

Production/PBS

"...a gripping exploration of faith and reason...Remarkable" —*Time Out (London)*

"Powerful and thoughtful..." —*The Guardian (UK)*

Elie Wiesel, survivor of Auschwitz, wrote of an event that took place while he was in the camp when a group of rabbis decided to put God on trial for what was happening. This film is a powerful dramatic interpretation of this trial.

Since this is a drama, you will want to be sure to see both parts. We will reflect on how this film might help us think about Lent.

Mar. 10 & Mar. 17

CHAPLAINS

A new 2-hour documentary film that takes the viewer into the dynamic world of chaplains – men and women who represent their own particular faith tradition but are trained to be of comfort and support to everyone – religious or not.

With a tradition dating back centuries, chaplains today are on the front lines – often in the midst of life and death situations – where the questions are the deepest and the need for spiritual and pastoral care the greatest.

Your vicar and her husband are chaplains! We will conclude our series with a reflection on how faith is expressed in the larger community.

<http://journeyfilms.com/chaplains/#aboutchaplains>



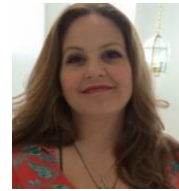
SOUPER BOWL OF CARING

More than 25 years ago, the Souper Bowl of Caring began with a simple prayer from a single youth group: *"Lord, even as we enjoy the Super Bowl football game, help us be mindful of those without a bowl of soup to eat."* Since that day, more than \$110 million has been raised for local charities across the country through Souper Bowl of Caring. It has become a powerful movement that is transforming the time around the Big Game into the nation's largest celebration of giving and serving. Please support the St. Francis Youth as they collect canned food for Care and Share and raise money for the Samaritan Center. Our Youth will be standing by after the 10:15am service on February 7th, Super Bowl Sunday, with large soup pots to collect your donations of canned food and money (cash or checks made out to St. Francis are fine). This will be our 9th year in participating in the Souper Bowl of Caring.

Please give generously on Super Bowl Sunday and thanks for supporting our Youth.

Kathy Butler and Ginny Morgan

MEET THE NEW EVENTS COORDINATOR



I'm Ginny Morgan, and I'm the new Events Coordinator at St. Francis. I've only been at the church for about six months, but it's been a wonderful time for me. I'm married with four kids--two all grown up and two at home. It's been fun to meet people at St. Francis who share various interests of mine: sewing, literature, and even Star Wars. I'm passionate about prayer and that's one of the reasons St. Francis is a good fit for me...boy, do you like to pray! I look forward to getting to know more of you.

**As of February 7 there will
NOT be an 8:00 am Service on
Sunday Mornings.**

ECW
Episcopal Church Women



The ECW will have the Hillsides Box up at the altar for donations of unwrapped toys for children of all ages from January to March and would appreciate all donations. .

We meet the 1st Friday of every month in the church parish hall at 6:30 and would love to have you join us.

Sylvia Moya

Extreme thoughtfulness
Must be answered by profound
Appreciation.

Diantha Ain



BROWN BAG BIBLE STUDY...

has a great following each Monday at 12:00 to study the scriptures for the following Sunday. The group asks questions, seeks to delve deeply into understanding the scriptures and enjoys the fellowship and lunch together. If you are available, please join us in the Clare Room at 12 noon where David Kitch will be teaching and sharing about the text for the week.

Library News



I enjoy Madeleine L'Engle. *A Stone For A Pillow* is her take on Jacob who saw a ladder of angels, reaching from earth to heaven linking heaven to earth, the creation to the Creator. L'Engle is a marvelous storyteller and I was swept along with her on her journey dealing with redemption, forgiveness and the conflict of Good and Evil.

This and many other great books are in our library, just waiting to be read.

Happy reading,
Leslie Lonergan

St. Francis Mardi Gras Dinner & Festivities

Tuesday, Feb. 9th 6:00 pm

In the Parish Hall

Nawlins' Orleans style gumbo with rice, salad and bread, topped off by decadent desserts.

Mac & cheese served, too.

Wine & beer, too! Cajun tunes, King & Queen

Admission: \$12 per person, \$30 Family



This Article is from the LA Time, May 1998:

Their yard is filled with jungle gyms, a trampoline, chickens, pigs and fruit trees. Their house is a happy jumble of toys, bicycles and clothing.

Children dash through the rooms and cartwheel across the back lawn.

Four-year-old Rikki--who came to the Perrys three years ago with a fractured skull and signs of autism--dangles upside-down on a bar like a monkey, giggling and chewing gum.

Nine-year-old Azael--deaf and mute--gestures wildly to his foster mother in sign language from atop a ship-shaped toy.

And 6-year-old Roberta--who was born three months premature, weighing less than 2 pounds, addicted to cocaine and suffering from syphilis, meningitis, swelling of the brain, and intracranial bleeding--hoists her plump little body hand over hand on the monkey bars yelling "Look! Look!" until she comes crashing down and runs crying into her foster mother's open arms.

The Perrys care for six children, all severely disabled and considered the most difficult to place into foster homes. By all accounts, the couple have met their commitment to their foster children, building their lives around the youngsters and pouring their own money into raising them.

"We didn't intend to do it," Dona Perry said. "It's one of those things that just happened."

But the foster-care system has broken its commitment to the family, they say, by cutting their annual payments nearly in half and leaving them thousands of dollars short. The rationale?

The family moved from Calabasas to Ventura County, where the reimbursement rates paid to foster parents of severely disabled children are significantly lower.

The Perrys argue that Los Angeles County agreed to keep their rates unchanged and did so for the first two years after their 1994 move.

In fact, the family took in two more children during that period at the request of Los Angeles County's sprawling Department of Children and Family Services.

Myia arrived in May 1995 after moving through three foster homes. Rikki joined the Perry family in January 1996. James Perry, a certified public accountant, poured \$200,000 into the new Camarillo home--putting in a pool to help the children develop their motor skills, expanding the dining room to fit a table long enough for the whole family to sit together, and putting up fences to keep the yard safe.

But in 1996, without warning, their payments dropped from about \$60,000 a year to about \$36,000. And despite 14 administrative hearings settled in the Perrys' favor, the state has consistently blocked restoration of the money.

So the Perrys turned to the legal system last week, filing a lawsuit in Los Angeles Superior Court for each of their foster children.

They are seeking back payment from when the rates were cut in 1996, and demanding Los Angeles rates for the future. And they hope to adopt the children if payments can be continued--as they would be if they still lived in Los Angeles County.

Los Angeles officials had not seen the suits and would not respond to questions last week. State officials also would not comment on the case. But local and state documents filed with the suit substantiate that the rates were cut.

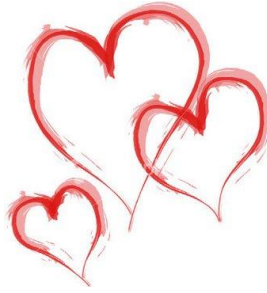
At a time when national and state legislators are urging better foster care and more adoptions, advocates say the Perry case shows the tremendous obstacles that foster families face.

Andrew Bridge of the nonprofit group Alliance for Children's Rights, which provides free legal services to foster children and children of poverty, says there has been a push to get foster children who are not going to return home adopted. This is especially true of special-needs children--those with physical and emotional disabilities such as the Perrys' children--who are extremely difficult to place.

Bridge, who is one of five lawyers working on the Perry cases, says foster care was never intended to be a long-term solution. Court rooms, bureaucrats and social workers," he said. "The goal is to get them into families with parents." Parents such as the Perrys. Instead, he says, the system has turned its back on the couple.

"The goal is to get the children back into a normalized family setting, a setting not dominated by lawyers, It's almost dinner time at the Perrys.

Dona Perry bustles about the kitchen, pulling leftover green curry pasta from one refrigerator, and two giant loaves of garlic bread from another. Azael dutifully sets the long, wooden banquet table, carefully arranging the silverware. A Brownie leader drops by. James Perry's 20-something son wanders out of a back room. A neighbor returns from gymnastics class with two more children--Myia, 7, and Shawn, 6. Shawn is of Chinese descent and has Down's syndrome.



February 2016 at St. Francis

Sunday	Monday	Tuesday	Wednesday	Thursday	Friday	Saturday
31 One Service 10:15 Annual Meeting Recycle Sunday	1 9am-2pm Office Hrs. Noon Brown Bag Bible Study in the Clare Room	2 1-5 pm Office Hrs.	3 9am-2pm Office Hrs 10 am Healing & Eucharist Service	4 1-5 pm Office Hrs.	5 Office Closed 6:30 pm ECW Mtg	6 BC Mtg. Retreat
7 Last Sunday After Epiphany Souper Bowl of Caring 10 am Sunday School/Jr. & Hi. School & College Class 10:15 am Eucharist with Music	8 9am-2pm Office Hrs. Noon Brown Bag Bible Study in the Clare Room	9 1-5 pm Office Hrs. 6pm Mardi Gras 6:30 pm Men's Group Meeting	10 Ash Wed 9am-2pm Office Hrs 10 am, 12:15 and 6 pm Services with Ashes & Eucharist 12:30 pm Sam Center Brd Mtg	11 1-5 pm Office Hrs. 6 pm Soup Supper 6:45 pm Screening 7:30 pm Reflection 7 pm Choir Rehearsal 6:30 pm EFM	12 Office Closed	13
14 Lent 1 Valentine's Day Fr. John Larson, Preaching 10 am Sunday School 10:15 am Eucharist with Music	15 9am-2pm Office Hrs. Franciscan Articles Due Noon Brown Bag Bible Study in the Clare Room	16 1-5 pm Office Hrs.	17 9am-2pm Office Hrs 10 am Healing & Eucharist Service	18 1-5 pm Office Hrs. 6 pm Soup Supper 6:45 pm Screening 7:30 pm Reflection 7 pm Choir Rehearsal	19 Office Closed	20
21 Lent 2 David Kitch, Preaching 10 am Sunday School/Jr. & Hi. School & College Class 10:15 am Eucharist with Music Belize Collection Noon BC Mtg	22 9am-2pm Office Hrs. Noon Brown Bag Bible Study in the Clare Room	23 1-5 pm Office Hrs.	24 9am-2pm Office Hrs 10 am Healing & Eucharist Service	25 1-5 pm Office Hrs. 6 pm Soup Supper 6:45 pm Screening 7:30 pm Reflection 7 pm Choir Rehearsal	26 Office Closed	27
28 Lent 3 Brainerd Dharmaraj, Preaching 10 am Sunday School 10:15 am Eucharist with Music Recycle Sunday St. Francis @5	29 9am-2pm Office Hrs. Noon Brown Bag Bible Study in the Clare Room					

NEW OPPORTUNITIES OFFERED THROUGH ST. FRANCIS



Want to be involved with the Samaritan Center?? Renee McGuire is heading up a Tutoring Program offered to all who need help in computer skills, literacy, and empowering clients to get on their feet. As well, Joe Zepf has been part of a Men's Mentoring Program offering everything from help in filling out forms, to a listening ear. Talk with Renee or Joe about the various opportunities that are available as we partner our mission and ministry with the Samaritan Center.

Our church members have asked what useful items **The Samaritan Center** can use the most. All shelf-stable goods are helpful, as well as cleaning products and trash bags. In particular, the Kitchen is always in need for the following for daily lunches given to clients:

- **Juice or any Beverages in Pouches**
- **Jelly (grape, strawberry, any kind for sandwiches)**
- **Peanut Butter**
- **Lunch Bags**

Update of Needs for the Samaritan Center. . .trash bags tall kitchen size and 33 gallon, napkins, aluminum foil, Styrofoam coup bowls, ammonia, bleach and tube socks for men and toilet paper. Eggs, Rain Ponchos, Milk (ongoing need for awhile), Beanies & warm gloves for both men and women, Sweatshirts, Sweatpants & Sweaters

Your donations go directly to feed the needs of our community. Donations can be brought to church or left at the Sam Center kitchen door. Thank you so much



RECYCLING AT ST FRANCIS

Please bring in your Recycling on the last Sunday of the month and we'll put those cans and bottles to good use! Our efforts will help support the needs of a family in our community and will be appreciated. See what glass and metal can do? So mark your calendars now with a big "R" for recycling at the end of the month. Thank you ahead of time for all your contributions!



St. Francis Coffee Hour Schedule

February 2016

	7	14	21	28	
10am	DOK	Fox Family	Men's Group	Ginny Morgan	

March 2016

	6	13	20 Palm Sunday	27 Easter	
10am	DOK	Rasmussen Family	Men's Group	Easter Breakfast Potluck	

Our coffee hour is a tradition of spending a few minutes together after our worship to connect and say hello to each other. All are invited because the "feeling of belonging" is for everyone to enjoy! It's a blessing to host this time to refresh ourselves before we return to the "busyness" of the world.

February 2016 Schedule for Holy Ministry

	Feb. 7	Feb. 14 Valentine's Day	Feb. 21	Feb. 28	March 6
10:15 a.m. Holy Eucharist					
Lector (O.T./Psalm)	Shantel K.	Tom B.	Grace	Esther D.	Shantel K.
Lector (Epistle/P.O.P)	Ryan M.	Kathy B.	Jan J.	Susan S.	Grace R.
LEM (Chalice)	Jan J. David S.	Tom & Kathy B.	Rob & Kristen W.	Esther & Brainerd D.	Jan J. David S.
Acolyte & Crucifer	Sophie Audrey	Emma Rachel	Brenda Grace	Brian Wesley	Sophie Audrey
Usher / Greeters	Joe Z.	Tony F. Rebecca S.	Tony F.	Rebecca S. Tony F.	Joe Z.
Altar Guild	Kathy B	Cora R.	Megan A.	Cora R.	Kathy B
Home Communion	Jan J.	Tom & Kathy B.		Brainerd & Esther D.	Jan J.
Vestry Counters	Tom B. Tony F.	Scott E. Lee H.	Vicky B. Kathy T.	Amy B. Joe Z.	Scott E. Tony F.
<p><u>If you are unable to serve on the day you are scheduled – please make arrangements with someone else to substitute for you. Please contact the church office to inform them of the changes. Thank you!</u></p>					

March 2016 Schedule for Holy Ministry

	6	Daylight Savings 13	Palm Sunday 20	EASTER 27	April 3
--	---	------------------------	-------------------	--------------	---------

10:15 a.m. Holy Eucharist

Lector (O.T./Psalm)	Shantel K.	Tom B.	Grace	Esther D.	Shantel K.
Lector (Epistle/P.O.P)	Grace R.	Kathy B.	Jan J.	Susan S.	Grace R.
LEM (Chalice)	Jan J. David S.	Tom & Kathy B.	Rob & Kristen W.	Esther & Brainerd D.	Jan J. David S.
Acolyte & Crucifer	Sophie Audrey	Emma Rachel	Brenda Grace	Brian Wesley	Sophie Audrey
Usher / Greeters	Joe Z.	Tony F. Rebecca S.	Tony F.	Rebecca S. Tony F.	Joe Z.
Altar Guild	Kathy B.	Cora R.	Megan A.	Kathy B.	Cora R.
Home Communion	Jan J.	Tom & Kathy B.		Brainerd & Esther D.	Jan J.
Vestry Counters	Scott E. Tony F.				

If you are unable to serve on the day you are scheduled – please make arrangements with someone else to substitute for you. Please contact the church office to inform them of the changes. Thank you!

the Franciscan

St. Francis of Assisi Episcopal Church
280 Royal Avenue, Simi Valley CA 93065

Newsletter – February 2016

- **Wednesdays**
10 am Healing Service

Sunday Services
Eucharist with Music 10:15 am



St. Francis of Assisi Episcopal Church

280 Royal Avenue, Simi Valley CA 93065

P.O. Box 940516, Simi Valley CA 93094

Phone (805)526-5141

stfrancis.simi@gmail.com

www.stfranchischurchofsimi.org